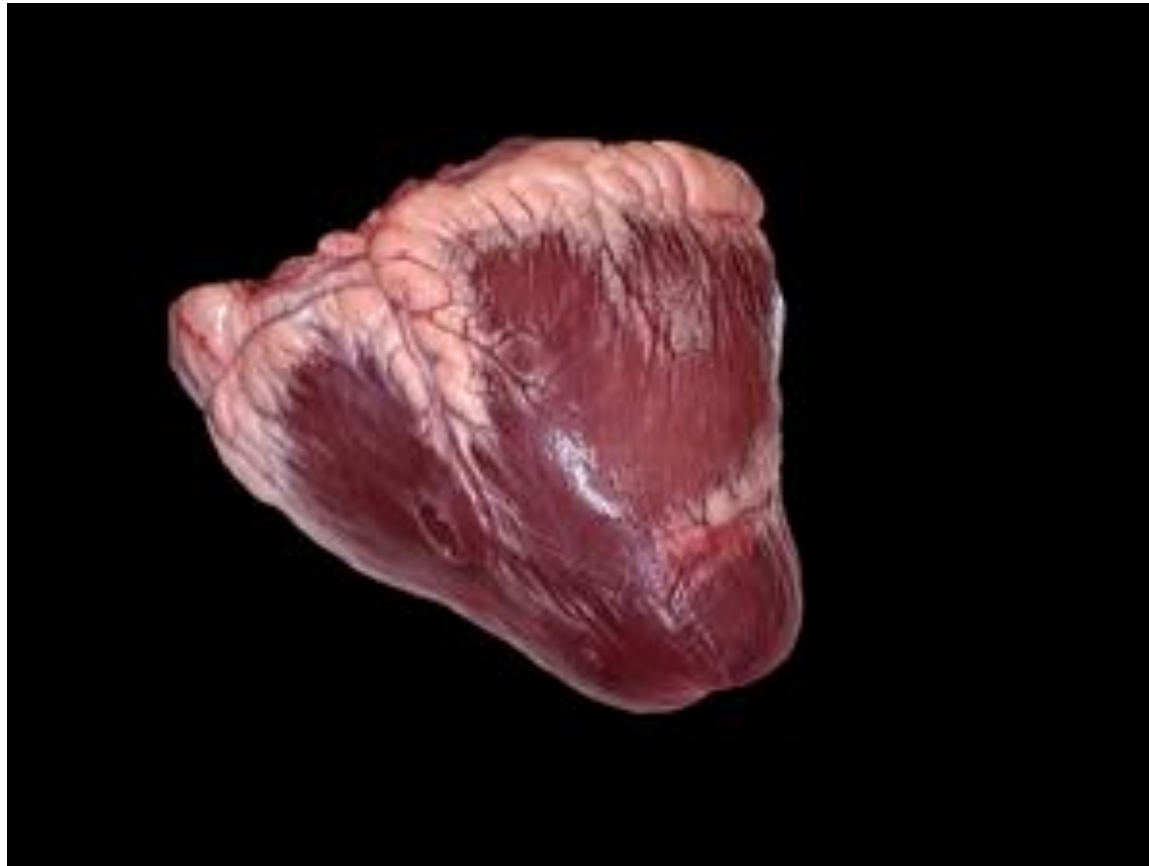


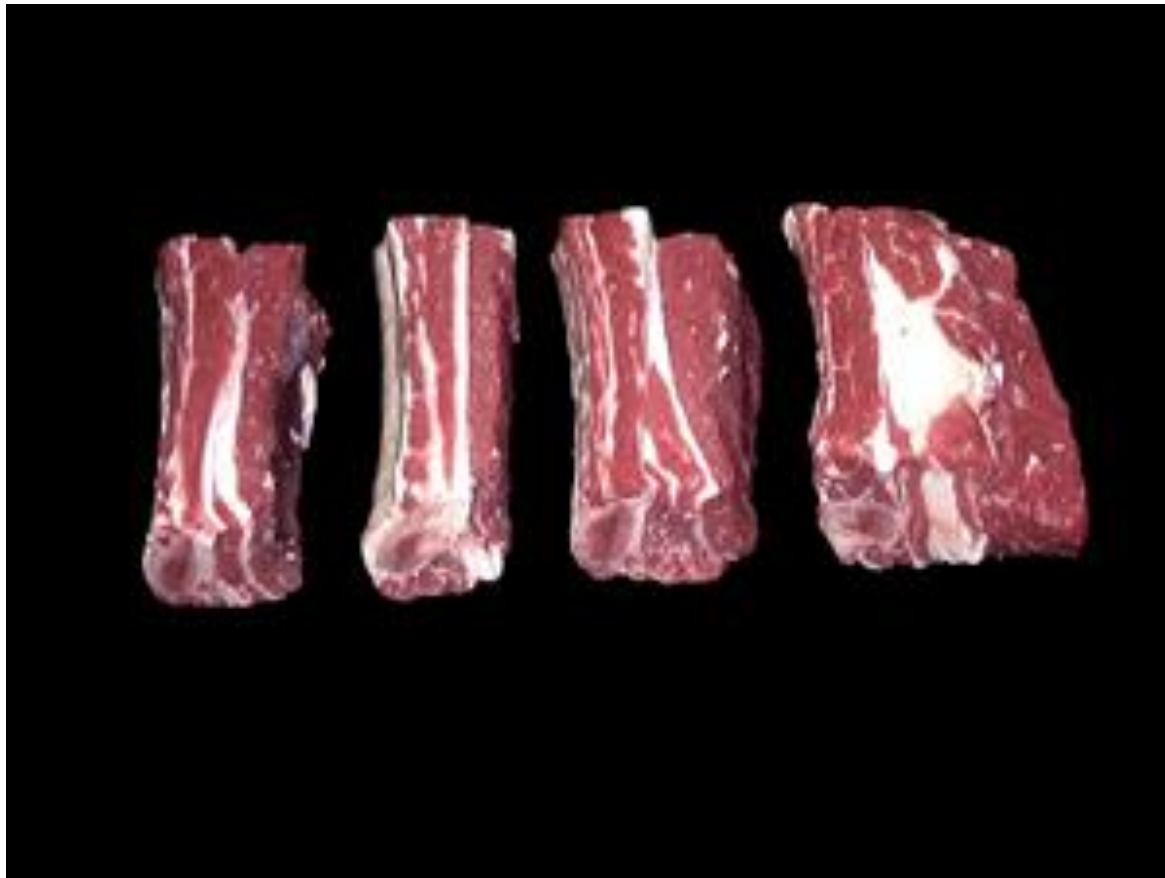
Beef Heart





Beef Arm Roast

Beef Short Ribs



Beef Blade Steak



Arm Steak Boneless



Beef Kidney



Beef Arm Steak



Beef Blade Roast



Beef for Stew



Beef Boneless Sirloin



Beef Liver



Top Loin Steak



Beef Bottom Round Steak



Brisket Whole



Tip Roast Cap Off



Brisket Corned



Cross Cuts



Point Half



Cube Steak



Beef Bottom Round Steak



Eye Roast



Eye of Round Roast



Cross Cuts Boneless



Eye Steak



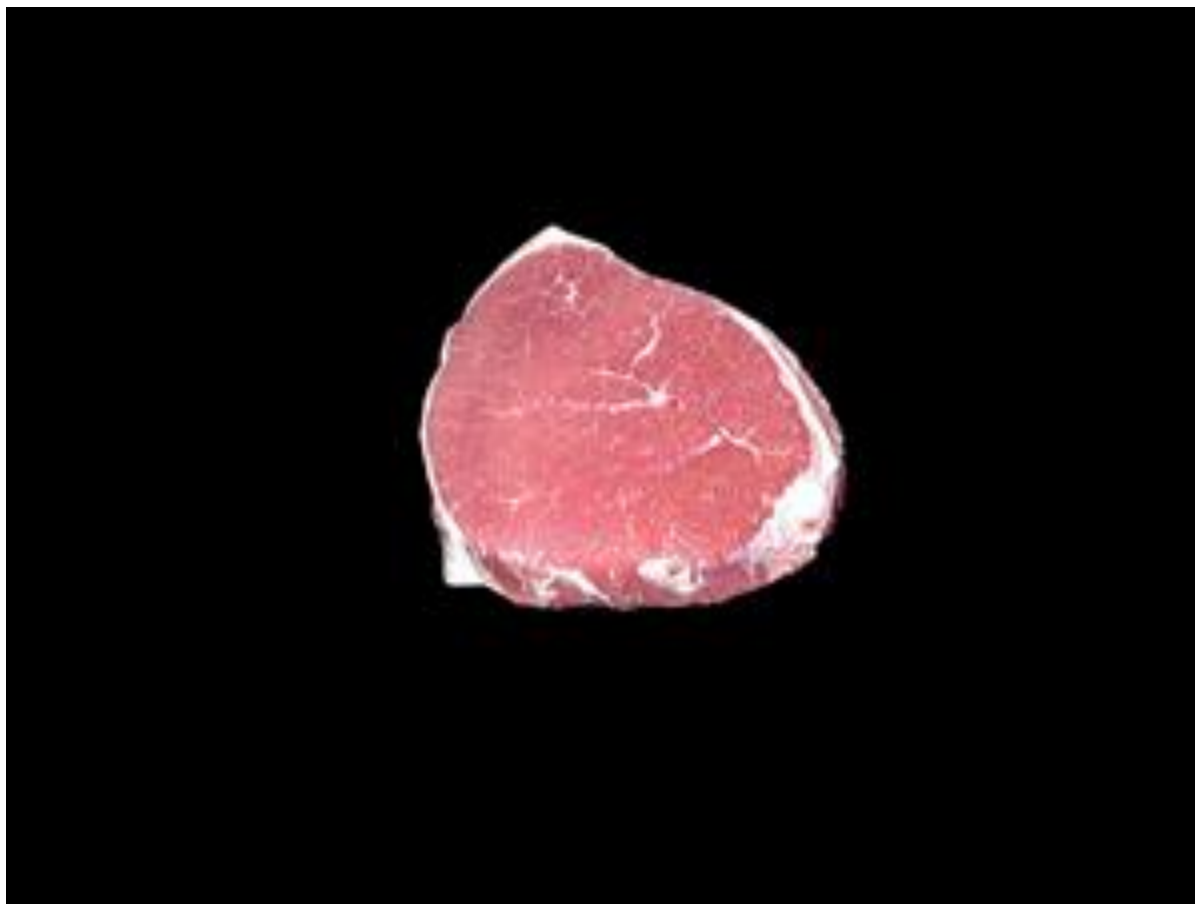
Flank Steak



Flat Bone Sirloin



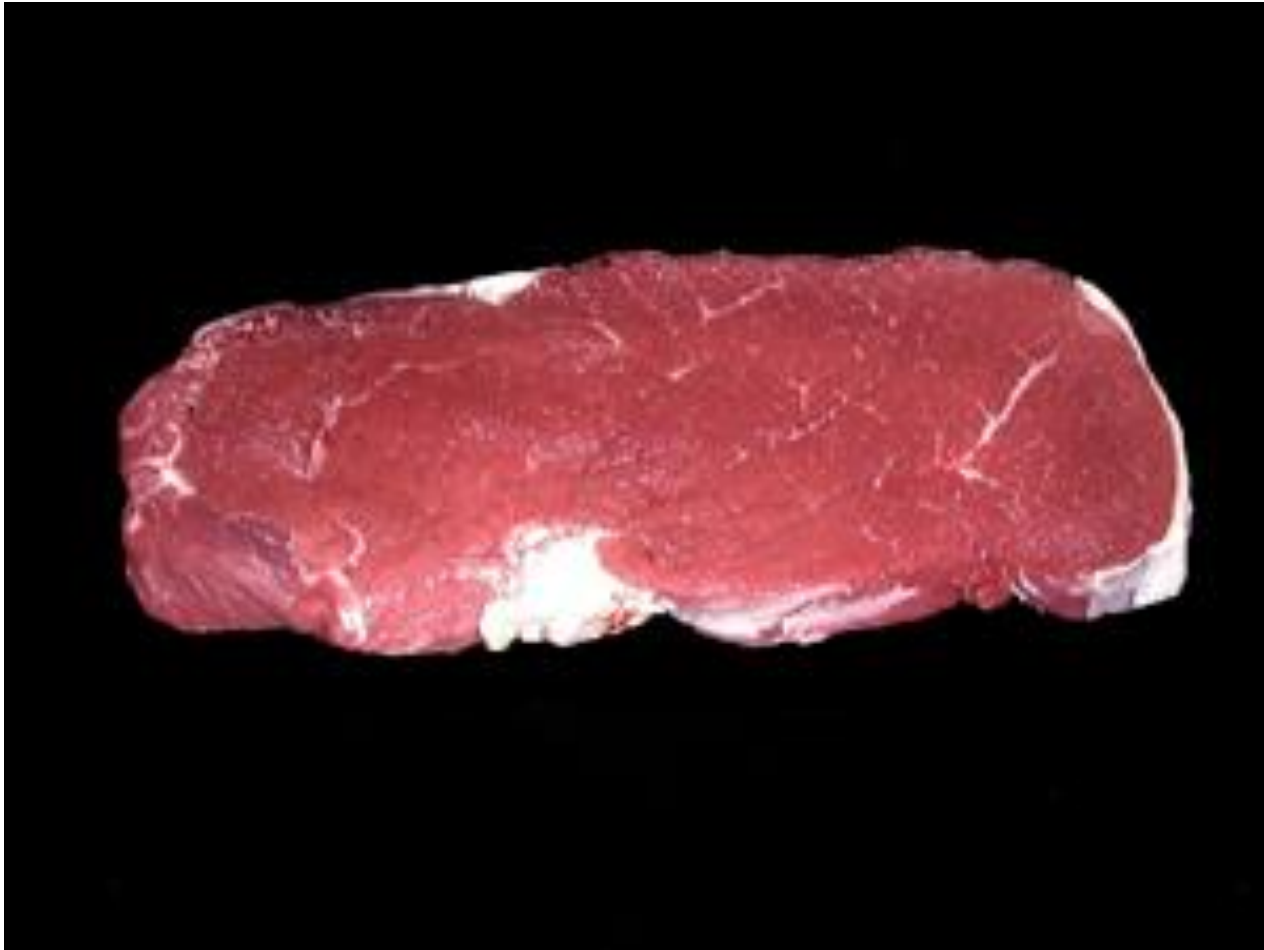
Eye Round Steak



Heel of Round Roast



Top Round Steak



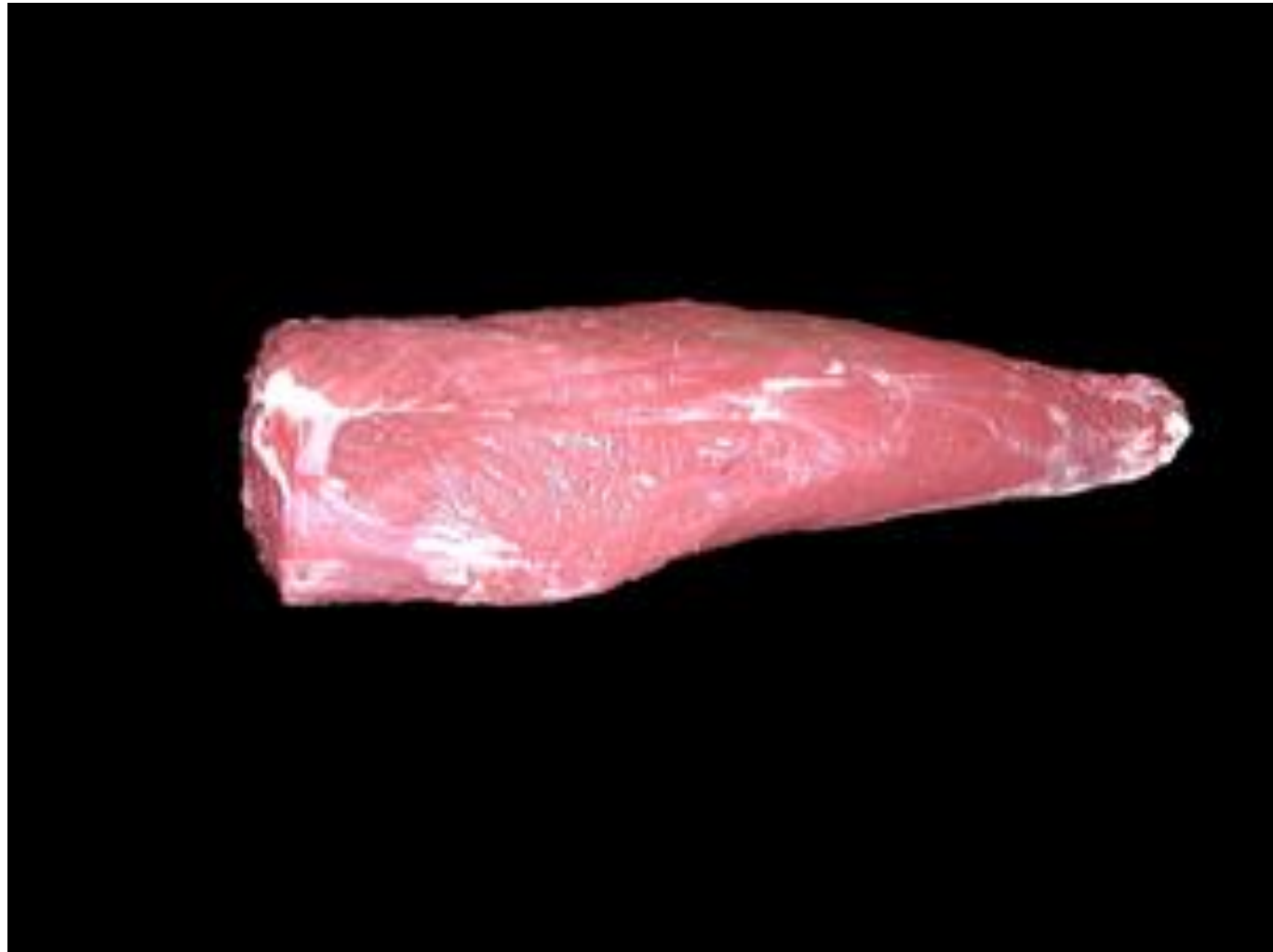
Flat Half



Large End Roast



Mock Tender Roast



Ground Beef



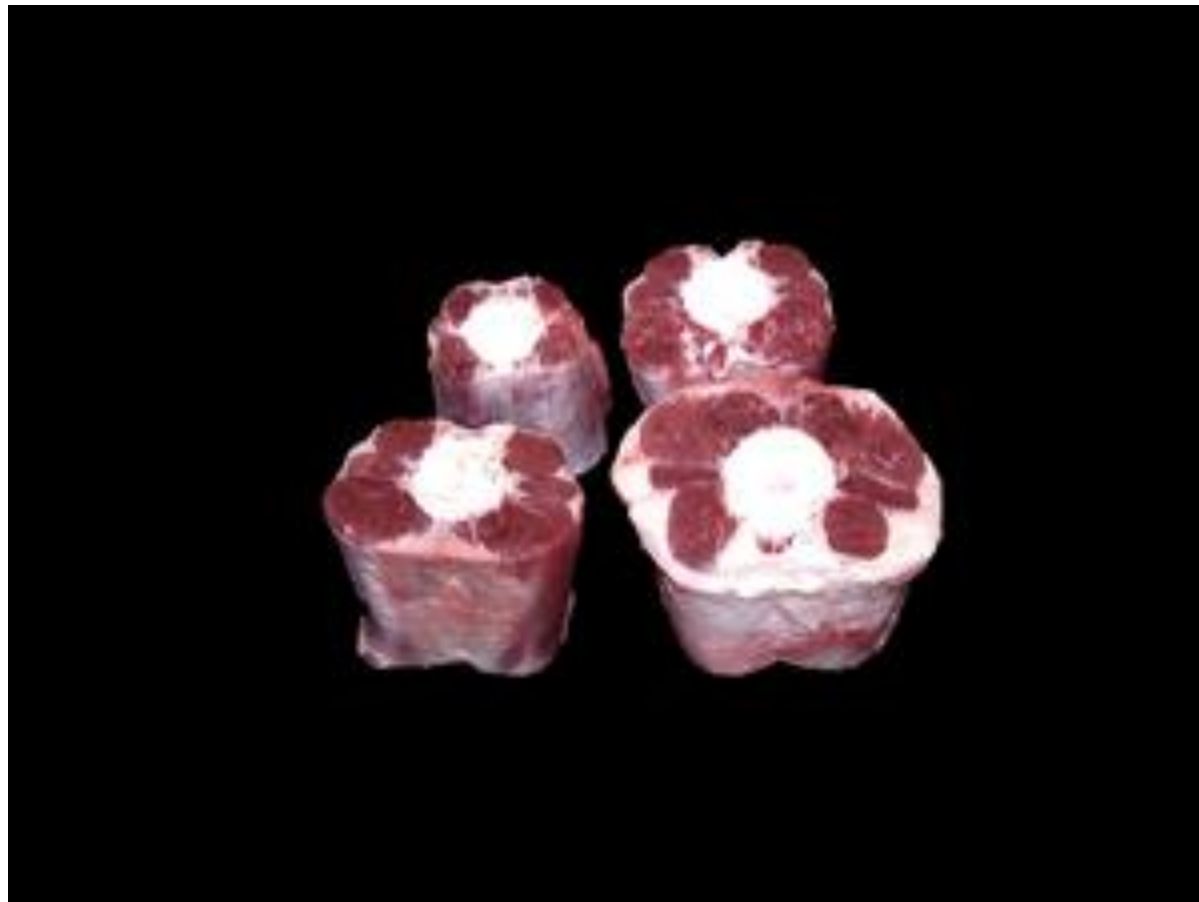
Pin Bone Sirloin Steak



Porterhouse Steak



Oxtail



Round Steak Bnls



Round Steak



Tip Steak



Tripe



Round Bone Sirloin Steak



Seven Bone Steak



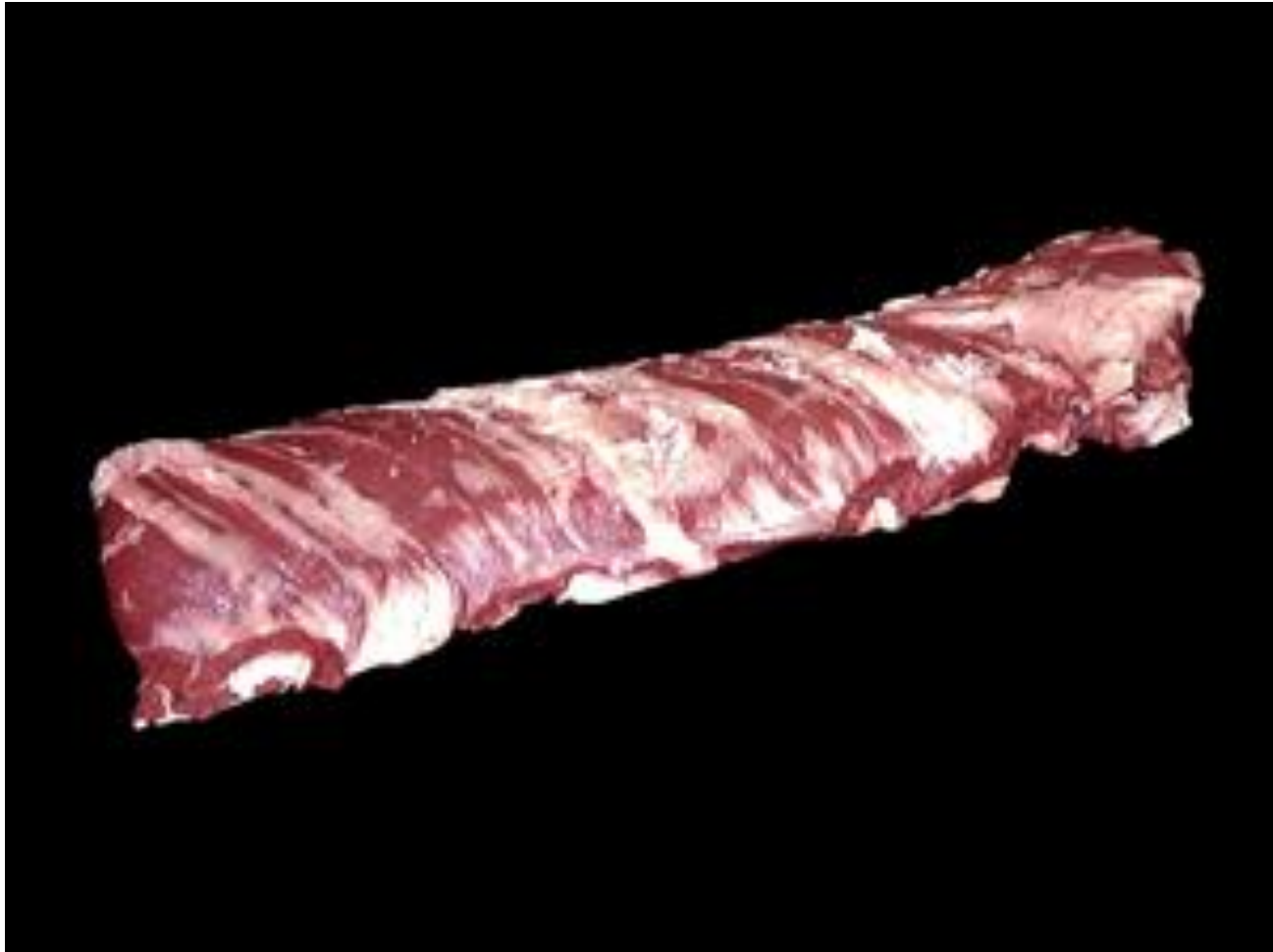
Mock Tender Steak



Small End Steak Bnls



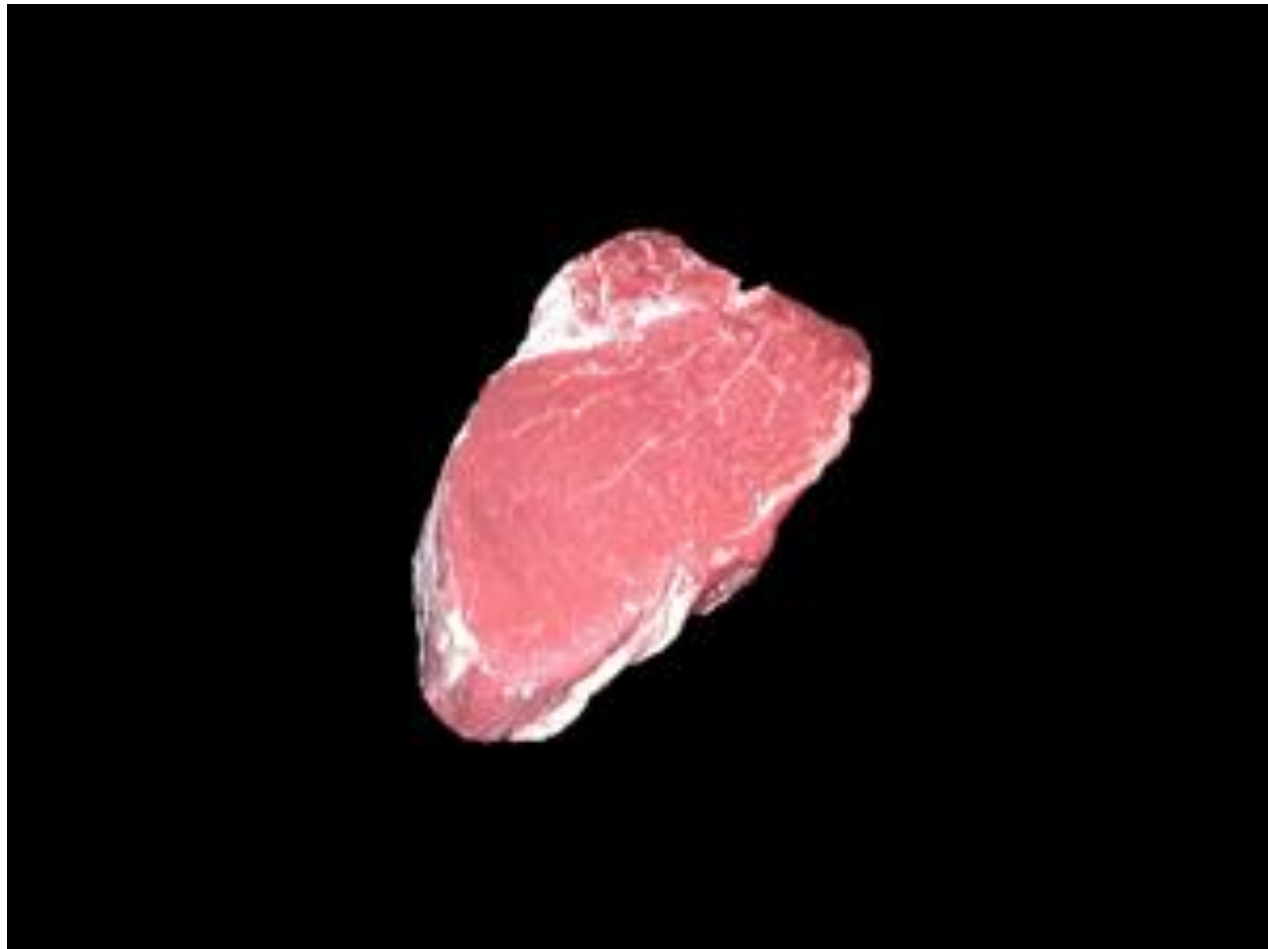
Skirt Steak



Roast Small End



Tenderloin Steak



Rump Roast Bnls.



Steak Small End



Tip Steak, Cap Off



Sweetbread



Chuck Eye Roast



T-Bone Steak



Tip Roast



Beef Tongue



Tenderloin Roast



Top Round Roast



Top Sirloin Steak bonless



Top Loin Steak Bnls



Sirloin Steak Wedge Bone



Arm Pot Roast Bnls



Seven Bone Roast

