



Beef Arm Roast

# Beef Arm Steak



# Arm Steak Boneless



# Beef for Stew



# Beef Heart



# Beef Kidney



# Beef Liver



# Beef Short Ribs





# Beef Blade Roast



# Beef Blade Steak



# Beef Boneless Sirloin



# Beef Bottom Round Roast



# Beef Bottom Round Steak



# Flat Half



# Point Half



# Brisket Whole





# Brisket Corned



# Cross Cuts Boneless



# Cross Cuts



# Cube Steak



# Eye Roast



# Eye of Round Roast



# Eye Round Steak



# Eye Steak





# Flank Steak



# Flat Bone Sirloin



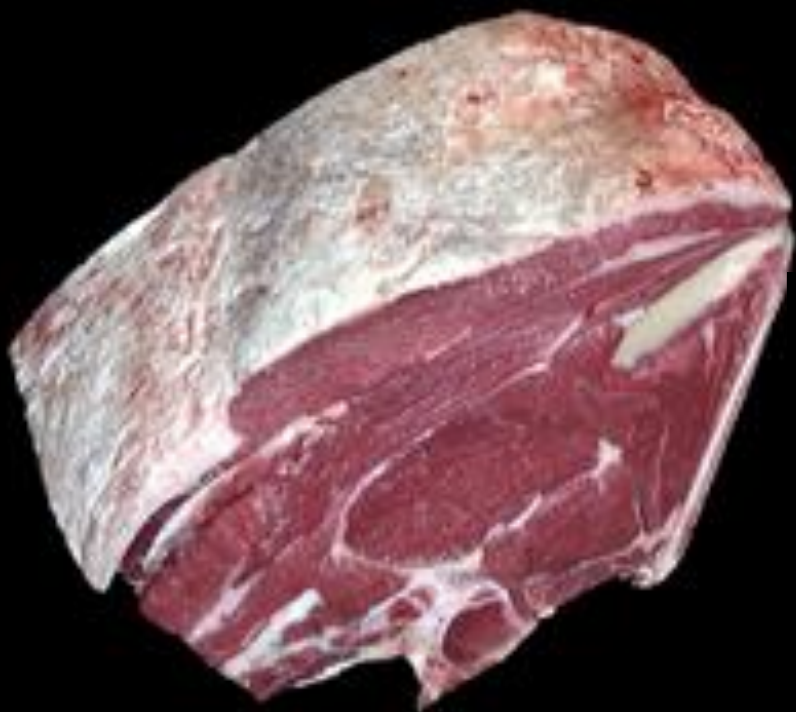
# Ground Beef



# Heel of Round Roast



# Large End Roast



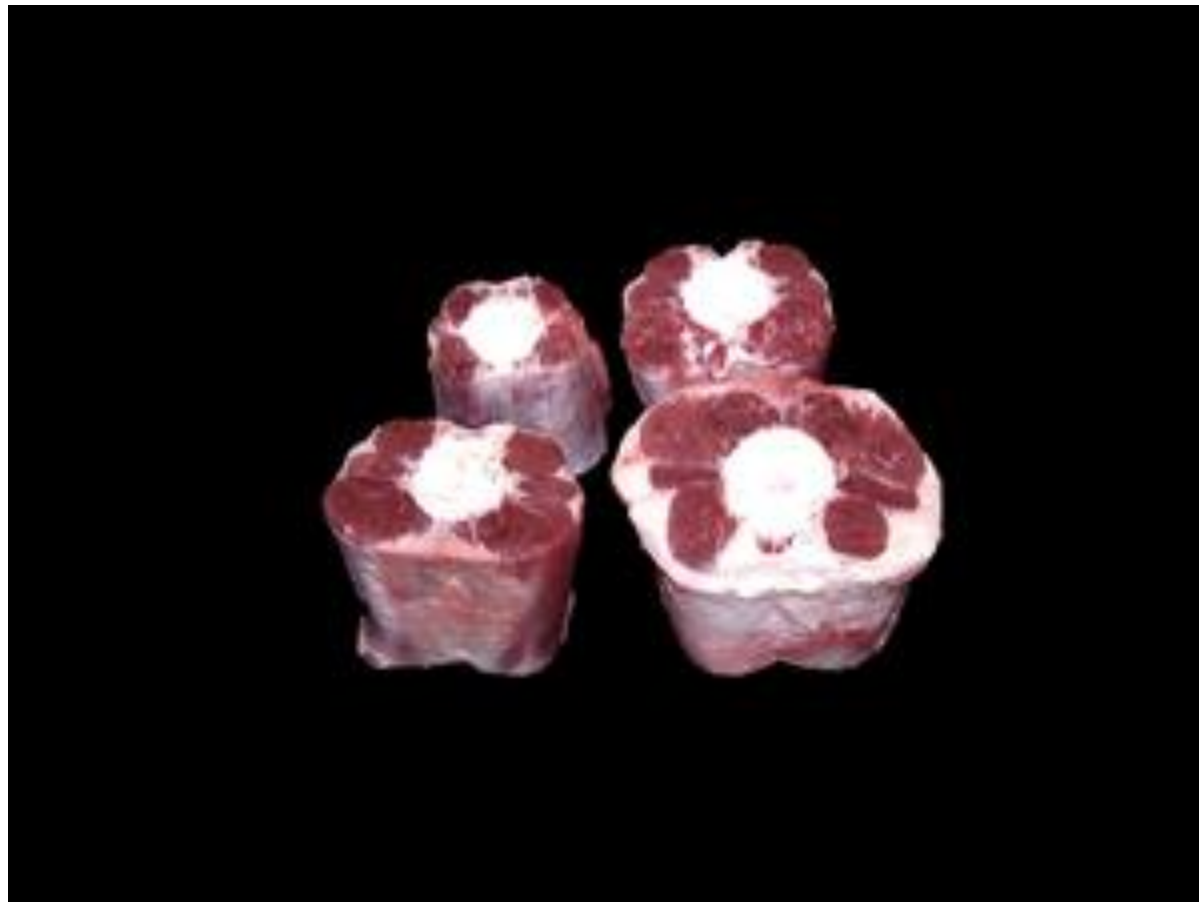
# Mock Tender Roast



# Mock Tender Steak



# Oxtail





# Pin Bone Sirloin Steak



# Porterhouse Steak



# Round Bone Sirloin Steak



# Round Steak Bnls



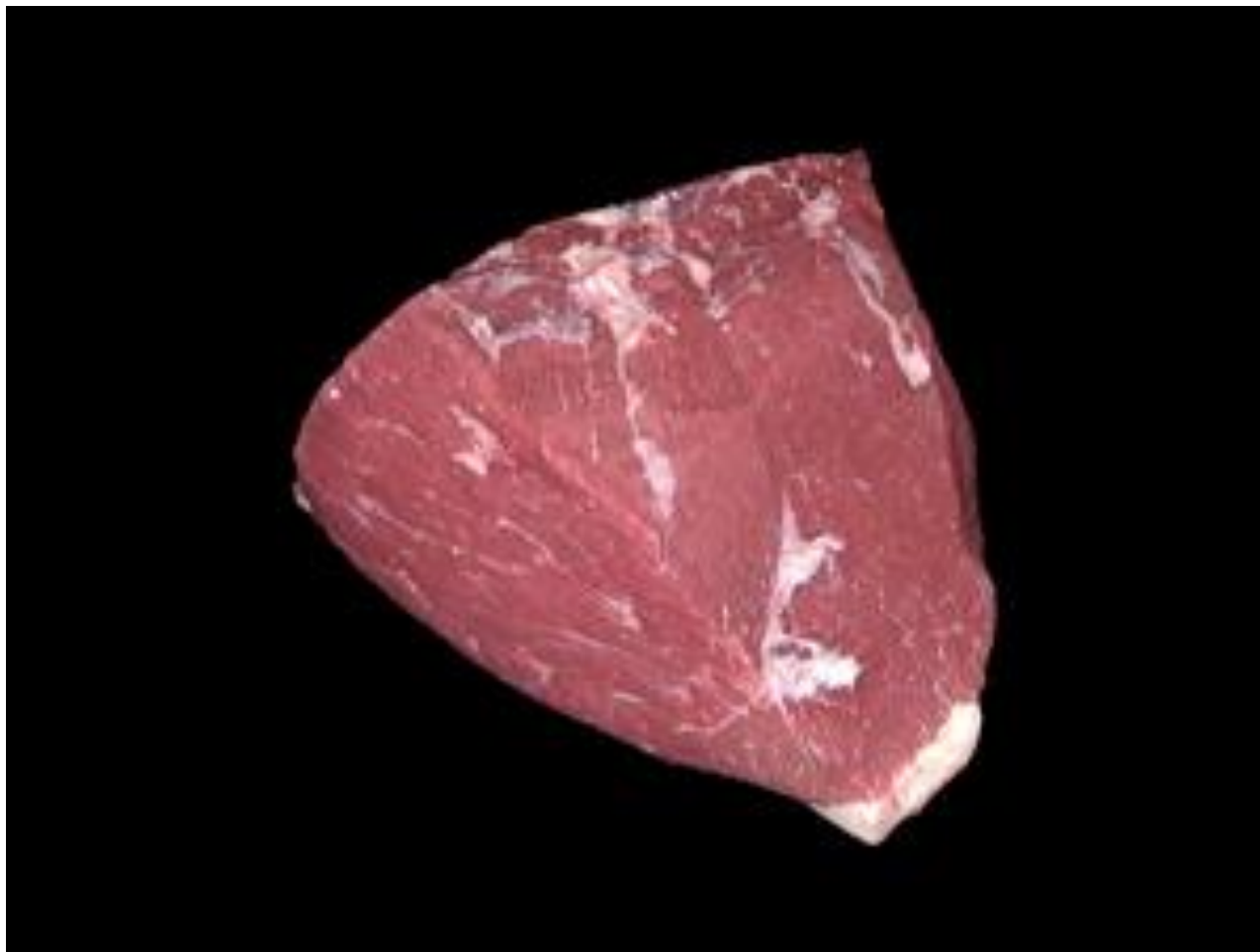
# Round Steak



# Tip Steak



# Rump Roast Bnls.



# Seven Bone Steak





# Skirt Steak



# Roast Small End



# Steak Small End



# Sweetbread



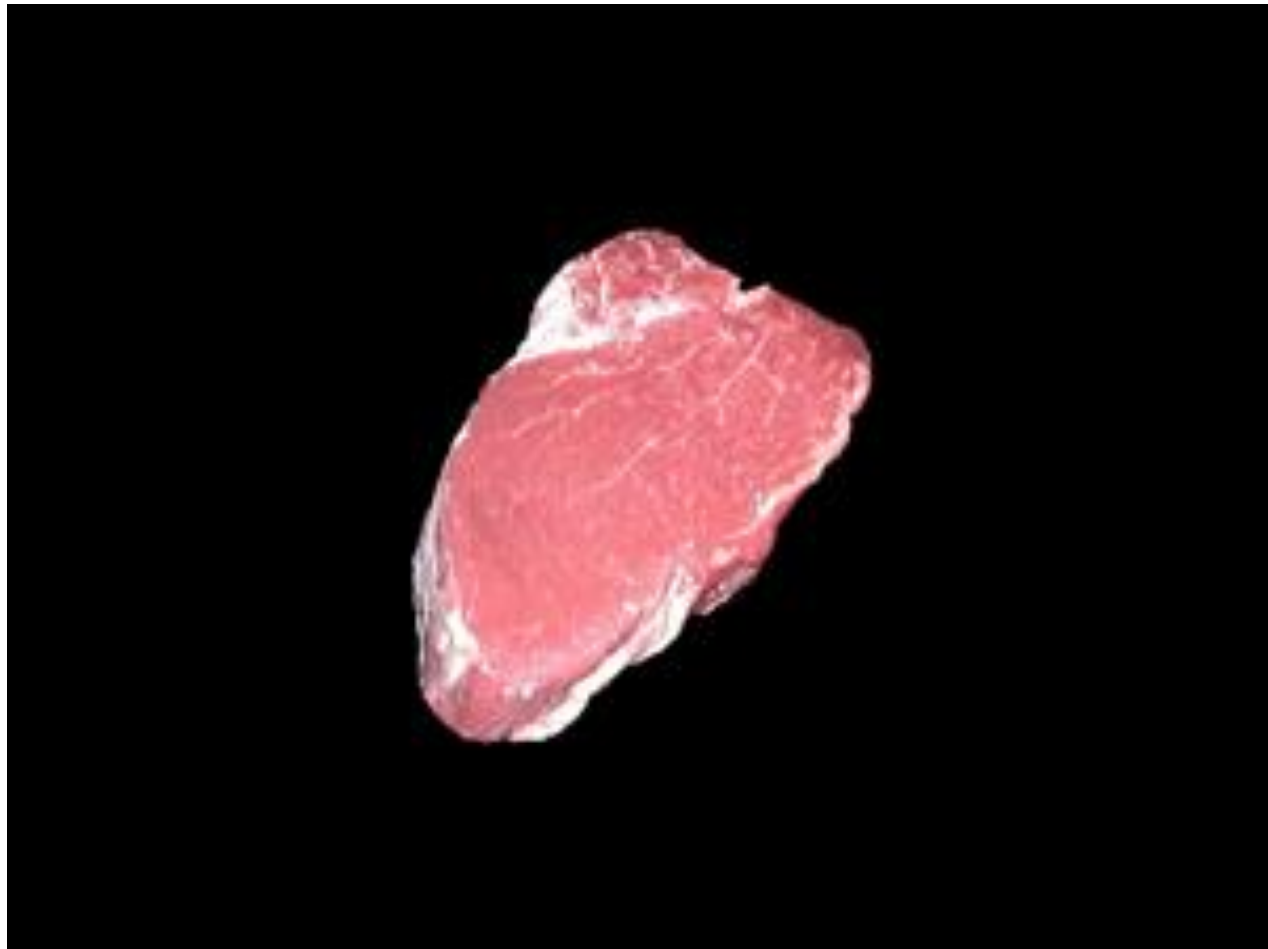
# T-Bone Steak



# Tenderloin Roast



# Tenderloin Steak



# Tip Roast Cap Off





# Tip Roast



# Tip Steak, Cap Off



# Beef Tongue



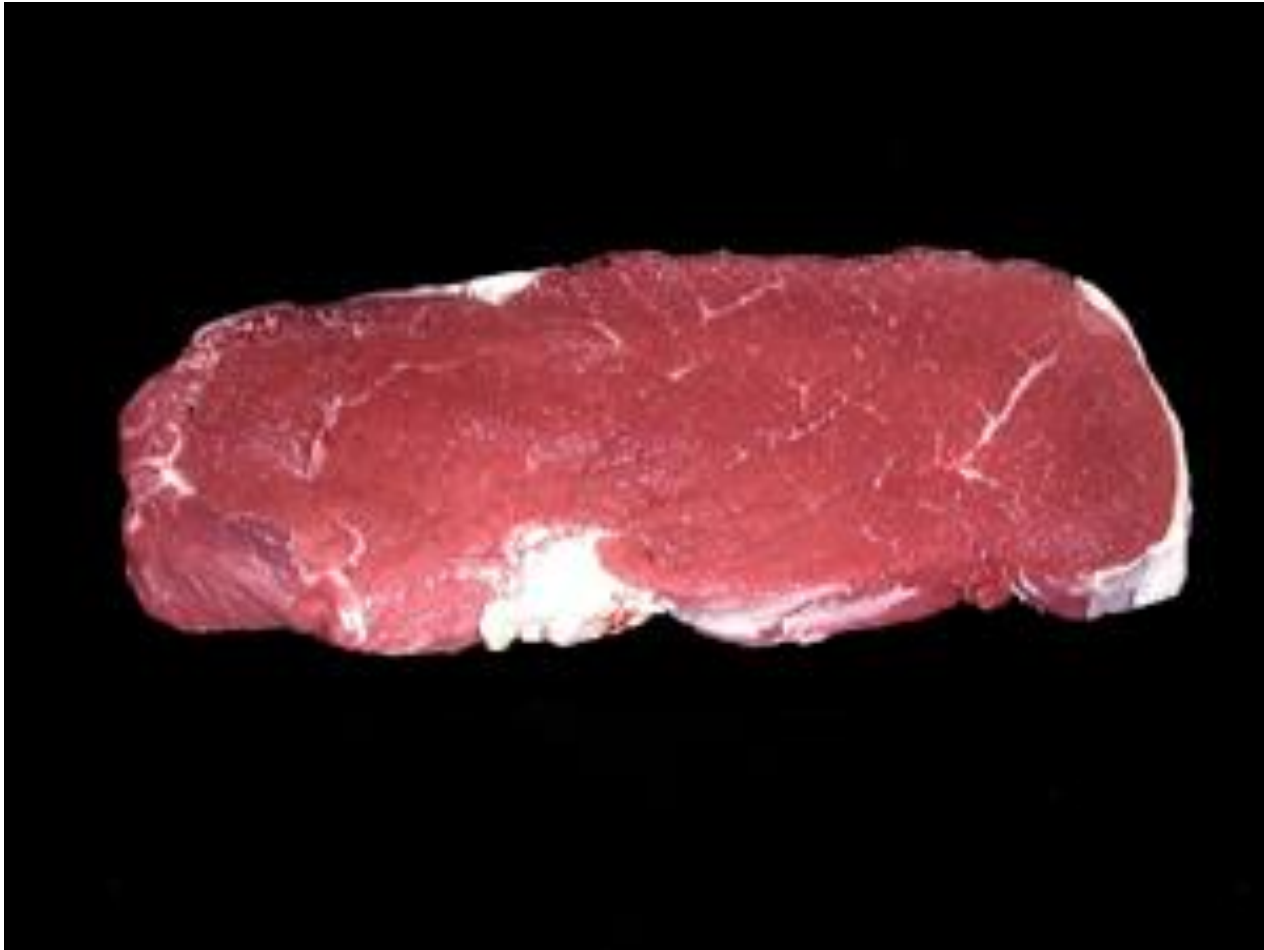
# Top Loin Steak



# Top Round Roast



# Top Round Steak



# Top Sirloin Steak bonless



# Tripe





# Top Loin Steak Bnls



# Sirloin Steak Wedge Bone



# Arm Pot Roast Bnls



# Chuck Eye Roast



# Seven Bone Roast



# Small End Steak Bnls

