

# Brisket Corned



# Brisket Whole



# Flat Half



# Seven Bone Roast





Beef Arm Roast

# Arm Pot Roast Bnls



# Beef Blade Roast



# Chuck Eye Roast

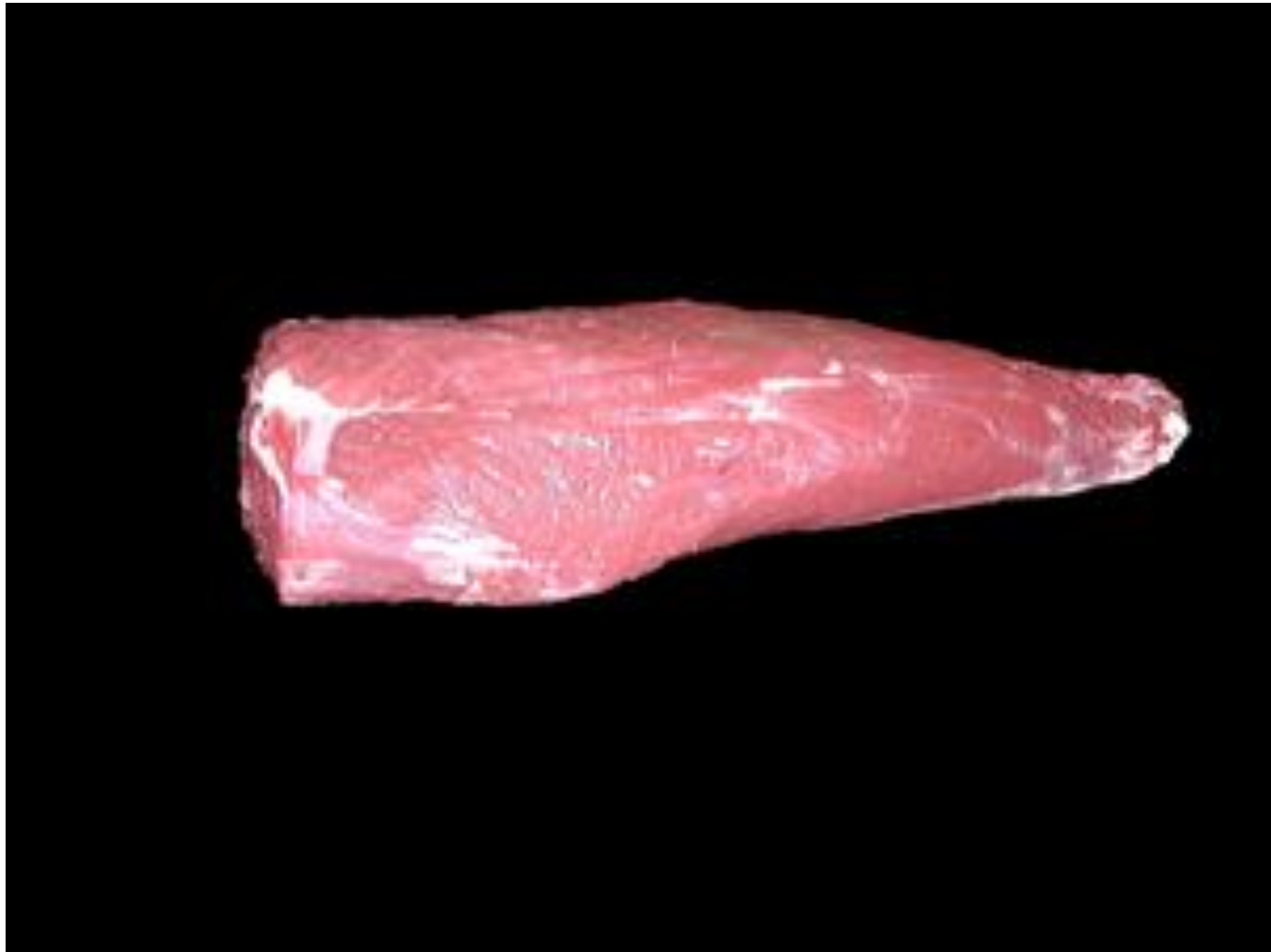




# Beef Chuck Eye Steak



# Mock Tender Roast



# Mock Tender Steak



# Petite Tender



# Shoulder Pot Roast



# Top Blade Steak (Flat Iron)



# Flank Steak



# Porterhouse Steak





# T-Bone Steak



# Tenderloin Roast



# Tenderloin Steak



# Top Loin Steak



# Top Loin Steak Bnls



# Top Sirloin Cap Steak, Bnls



# Top Sirloin Steak, Bnls Cap Off



# Top Sirloin Steak bonless

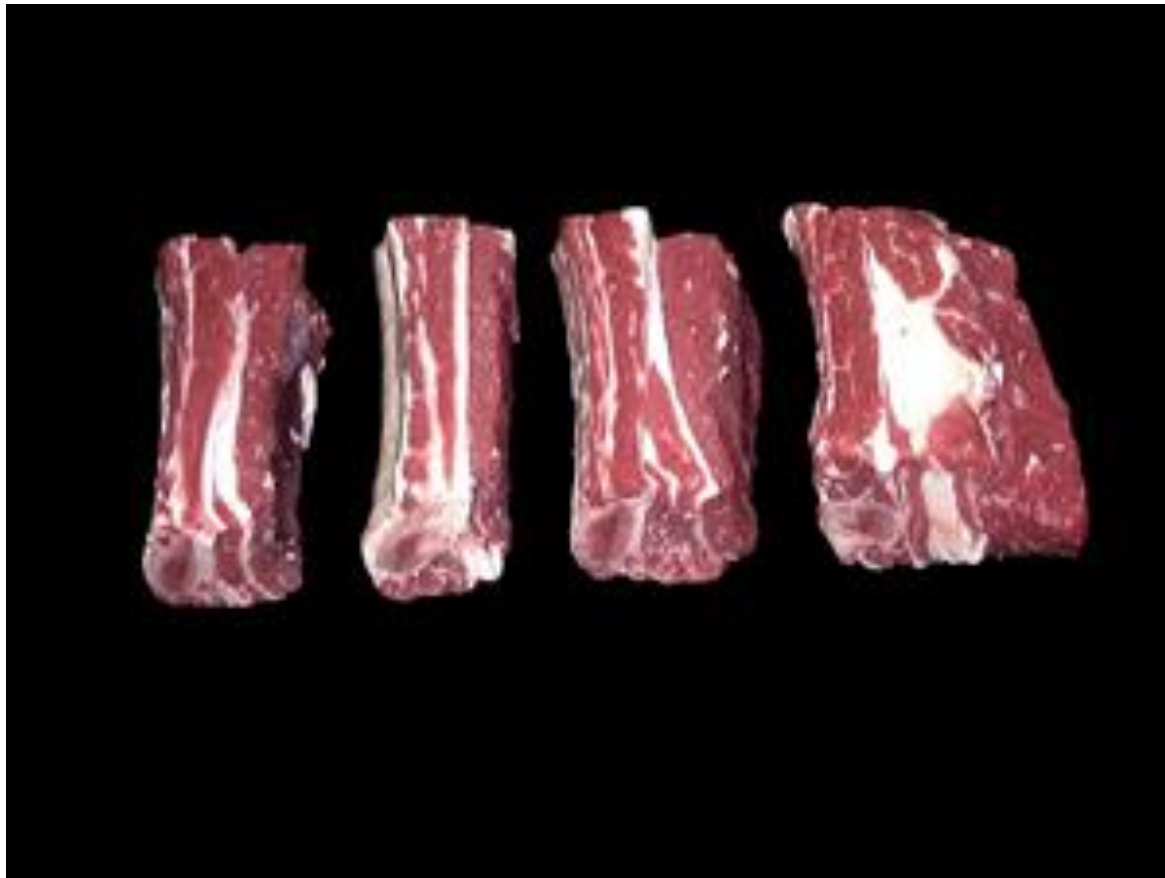




# Tri Tip Roast



# Beef Short Ribs



# Skirt Steak



# Rib Roast



# Eye Roast



# Eye Steak



# Rib Eye Steak Lip ON



# Beef Bottom Round Roast





# Bottom Round Rump Roast Bnls.



# Beef Bottom Round Steak



# Eye of Round Roast



# Eye Round Steak



# Round Steak



# Round Steak Bnls



# Tip Roast Cap Off



# Tip Steak, Cap Off

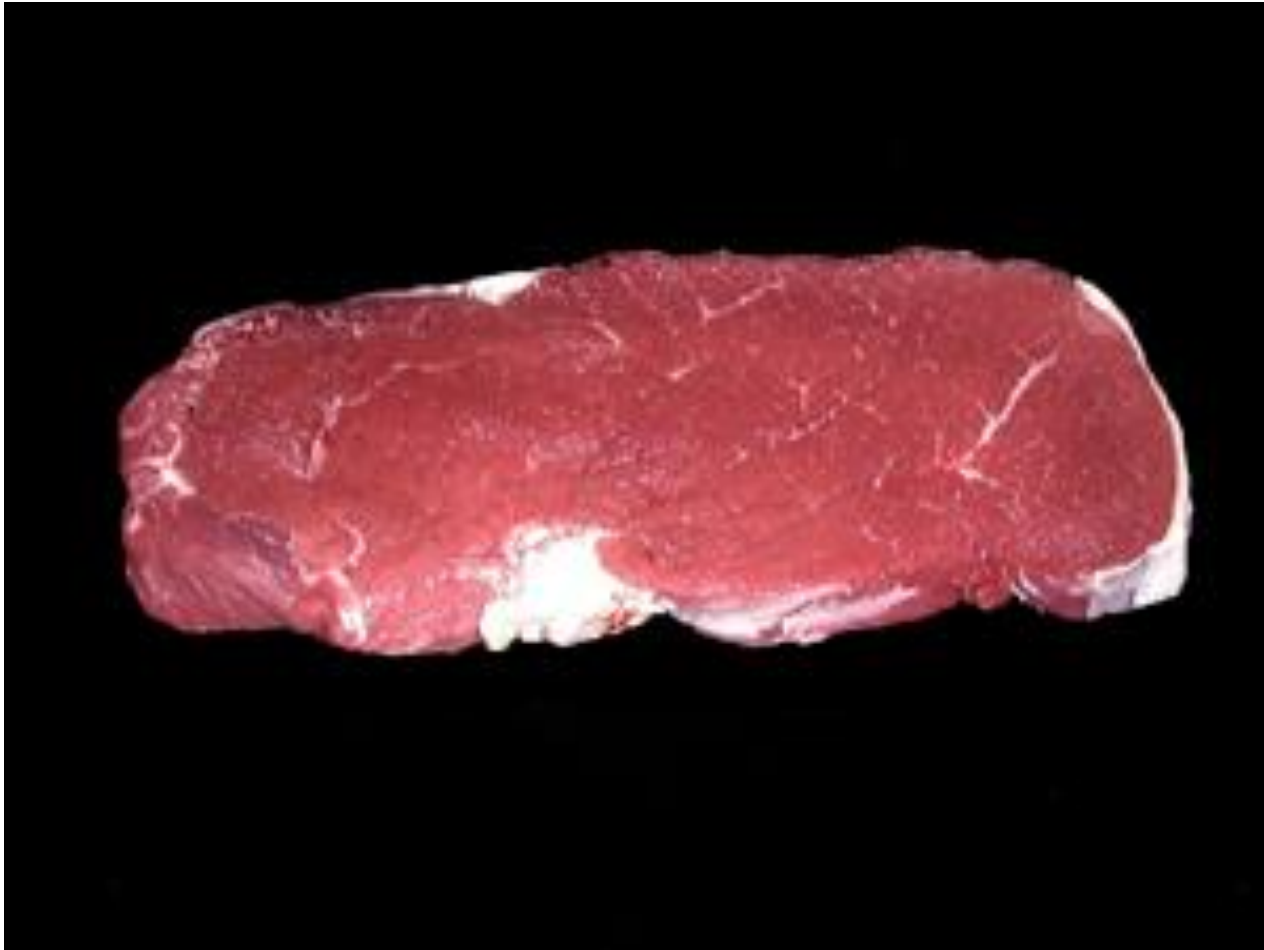




# Top Round Roast



# Top Round Steak



# Beef for Stew



# Cube Steak



# Ground Beef



# Beef Heart



# Beef Kidney

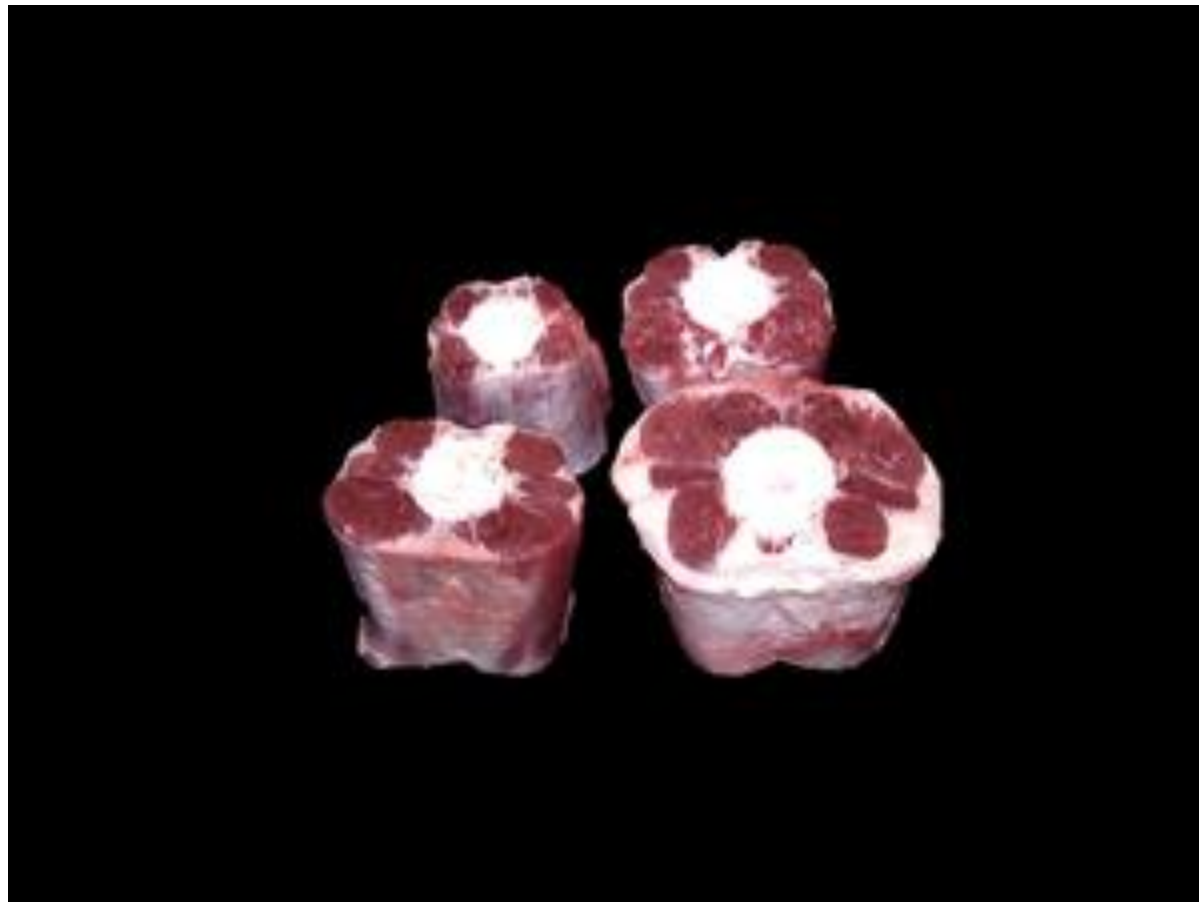


# Beef Liver





# Oxtail



# Beef Tongue



# Tripe

